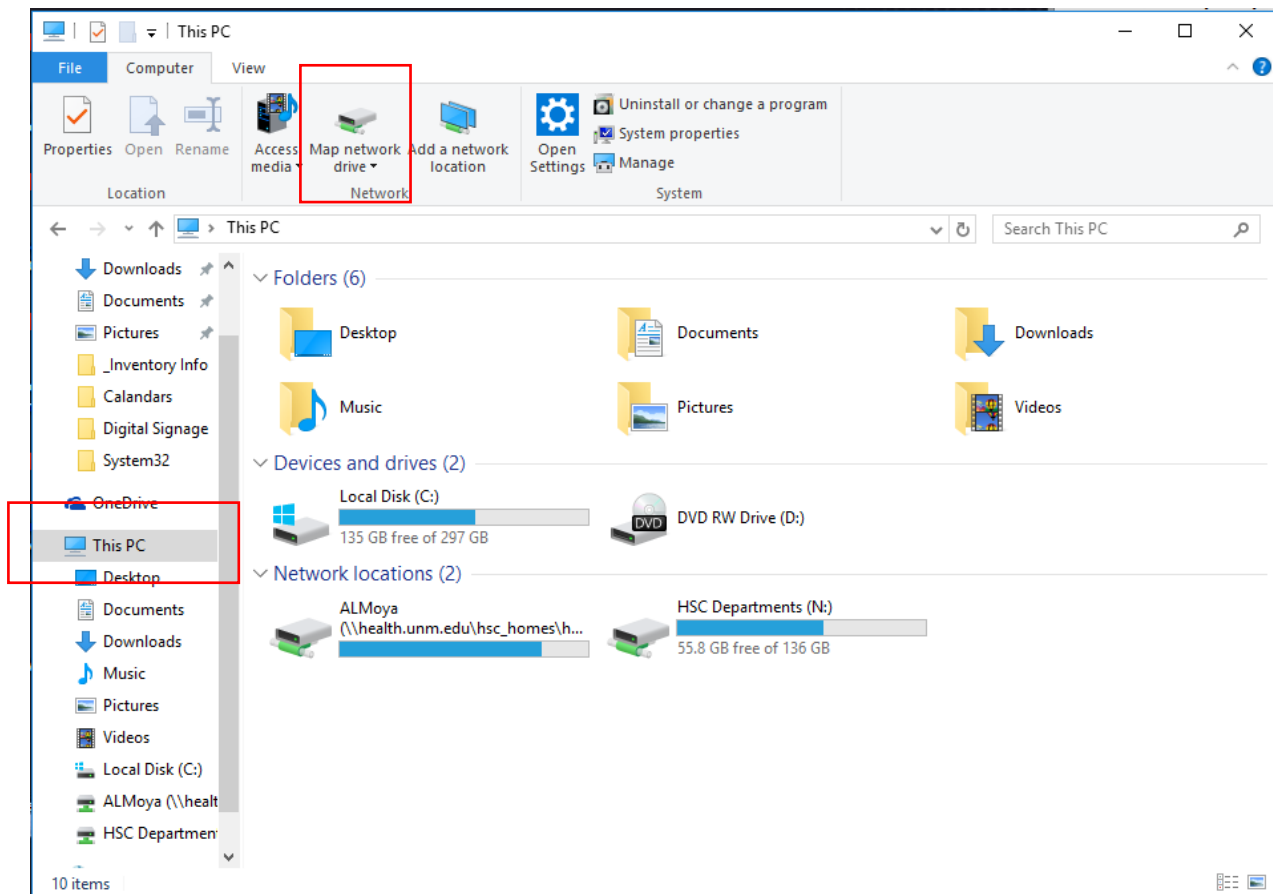


Open your folders and click on This PC in the left column. Then click on the **Computer** tab at the top and click on **Map network drive**.






Select K: drive and type the following:

[\\uh-nas\Groupshare3](#)

Make sure the Reconnect at sign-in box is checked

Click Browse and a new window will open showing the share drive.



  Map Network Drive

What network folder would you like to map?

Specify the drive letter for the connection and the folder that you want to connect to:

Drive:

K:

▼

Folder:

\\uh-nas\Groupshare3

▼

Browse...

Example: \\server\share

☒ Reconnect at sign-in

☐ Connect using different credentials

[Connect to a Web site that you can use to store your documents and pictures.](#)

Finish

Cancel