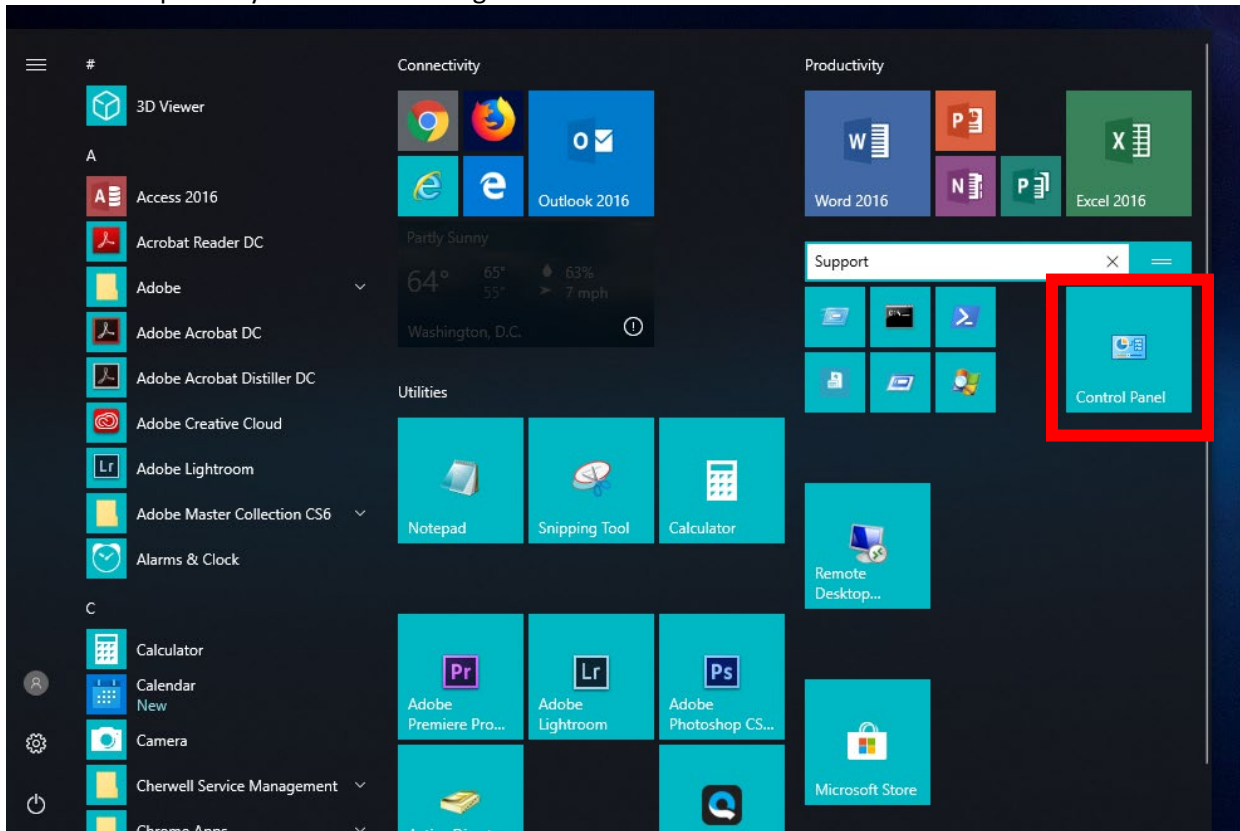
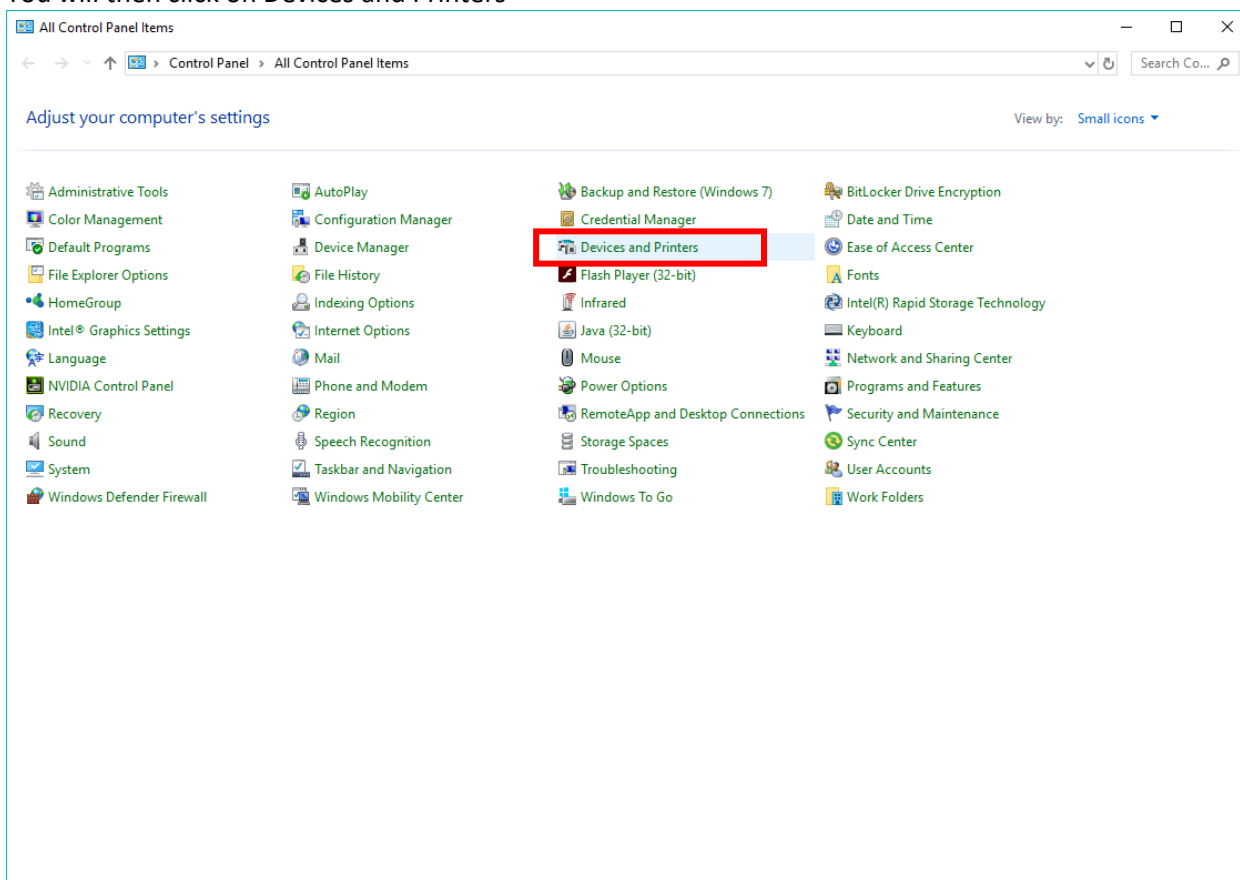


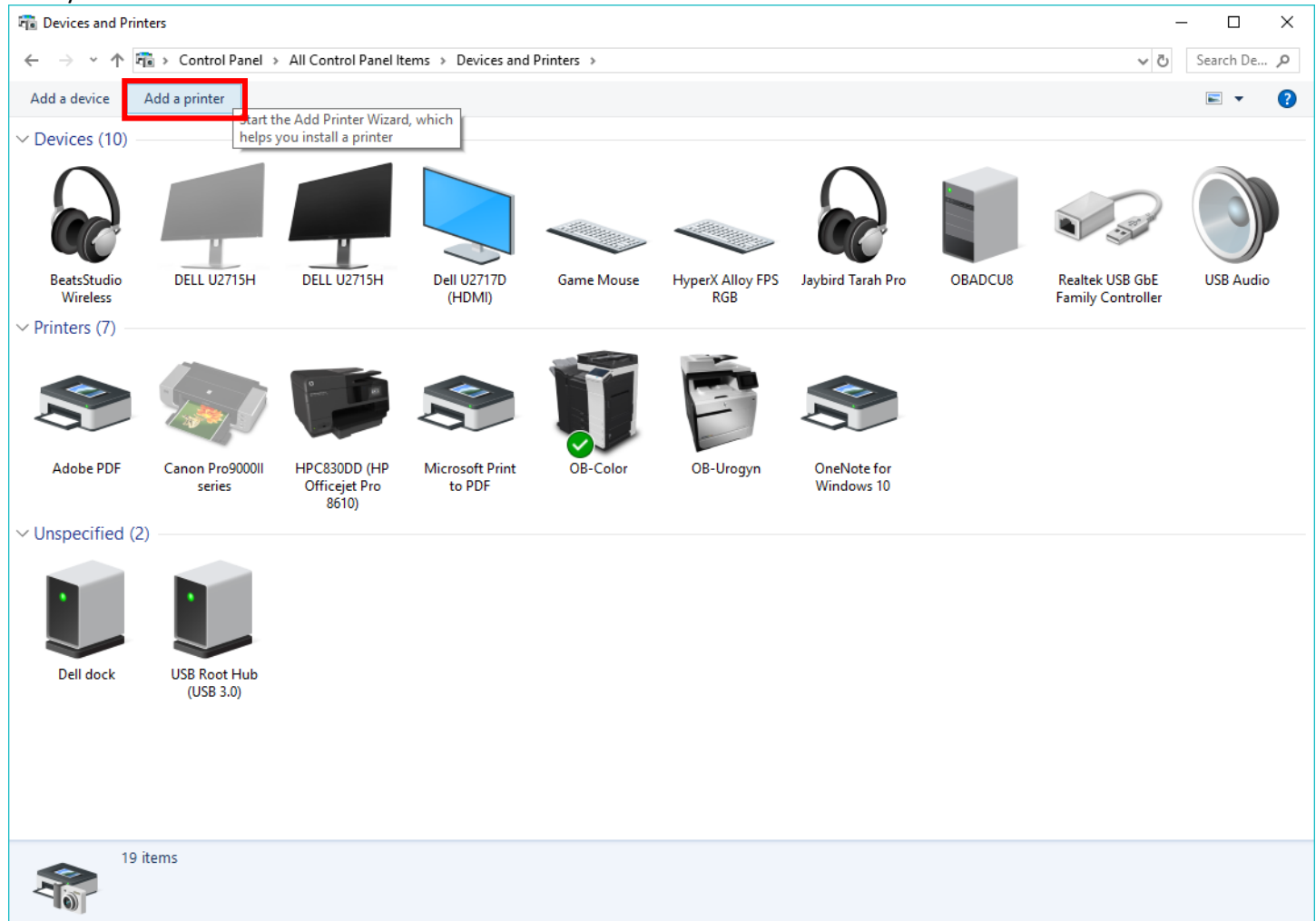
In install the printer you'll first need to go to the Control Panel.



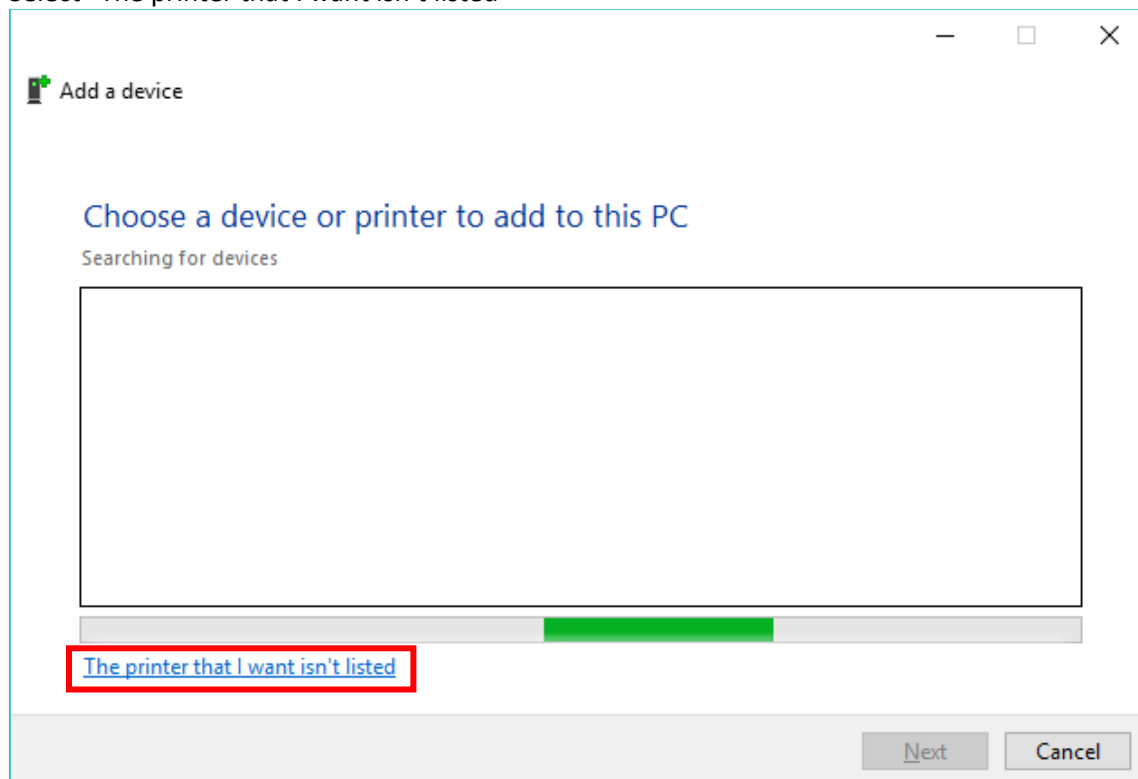
You will then click on Devices and Printers



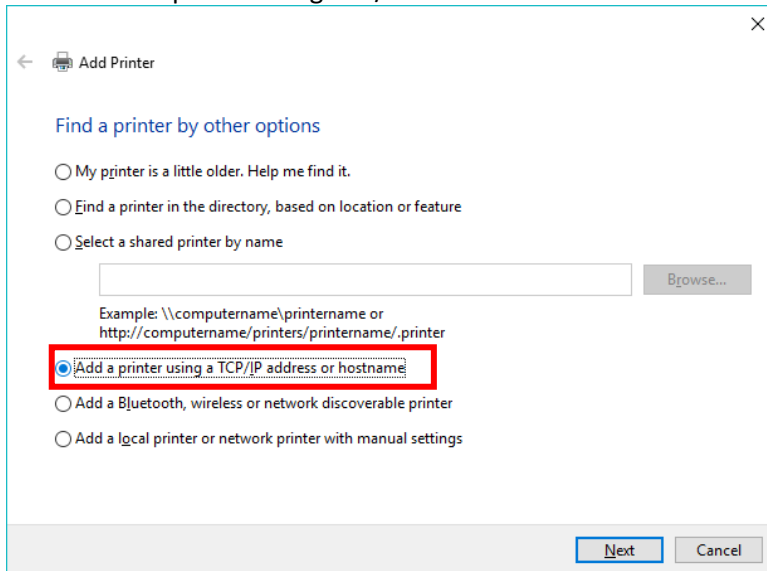
Next you'll click on Add a Printer



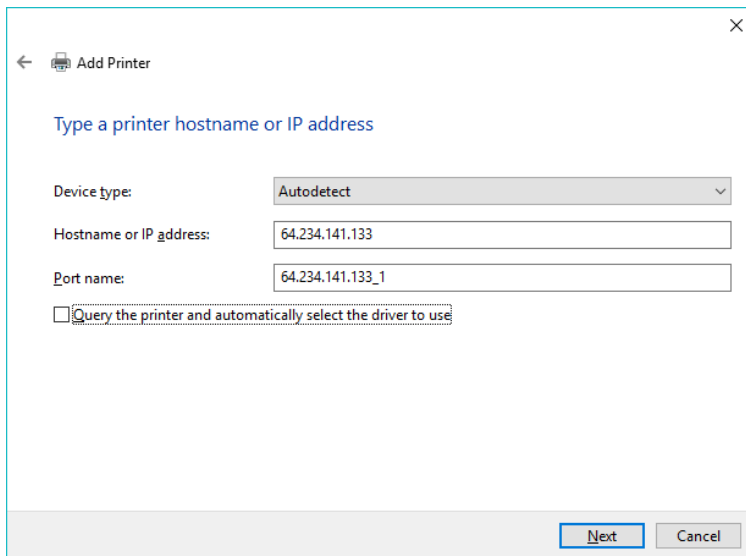
Select "The printer that I want isn't listed"



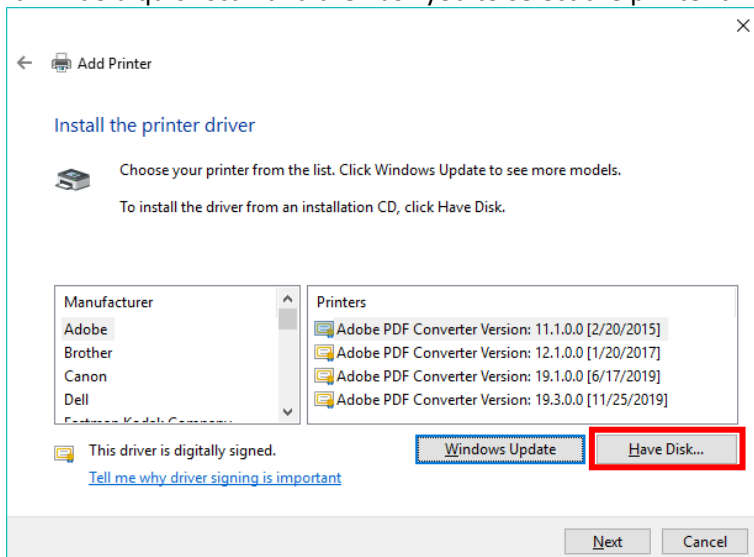
Select "Add a printer using TCP/IP address or hostname"



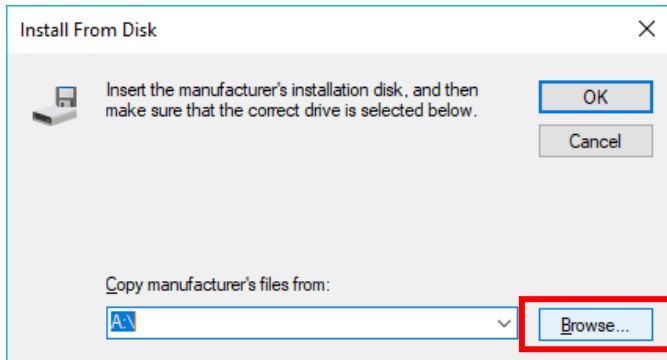
You'll then type in the IP address 64.234.141.133 and uncheck the box for "Query the printer and automatically select the driver to use"



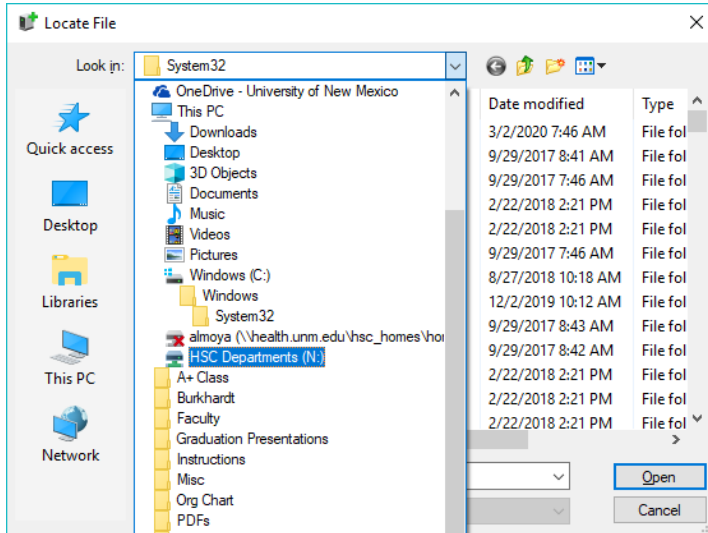
It will do a quick scan and then ask you to select the printer drive. Click on "Have Disk"



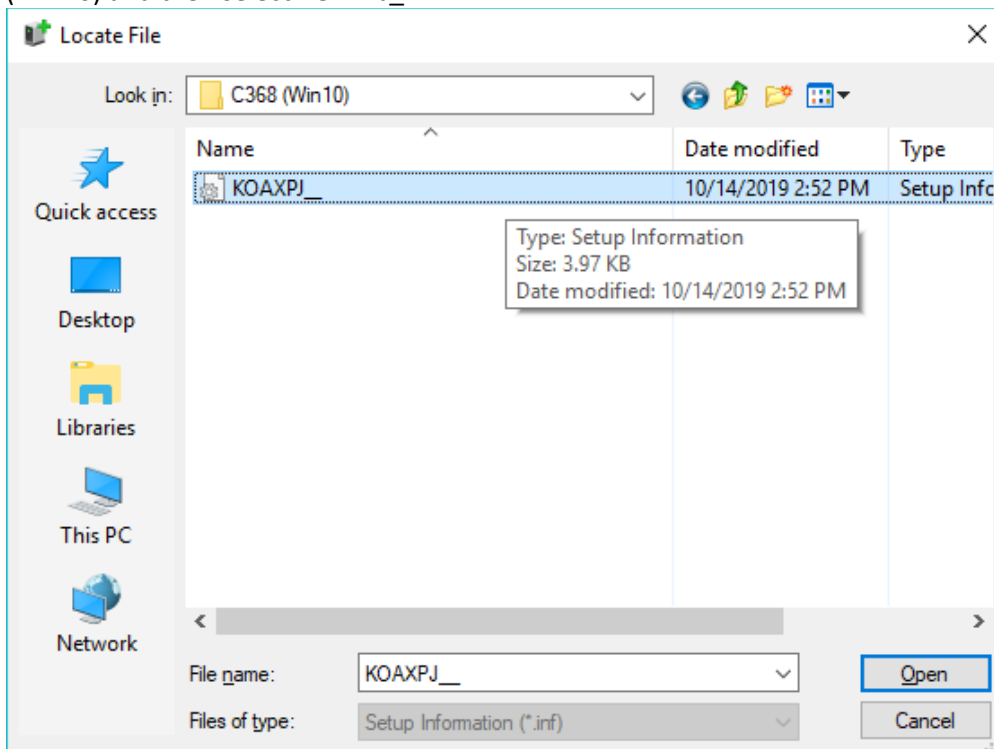
Next click on "Browse"



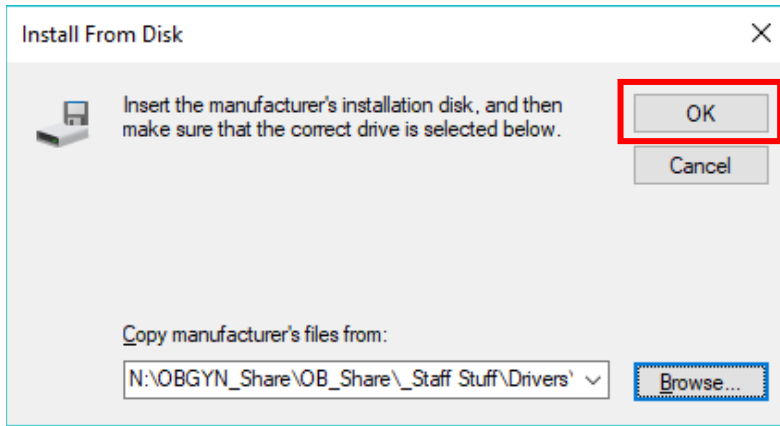
Select the N: drive



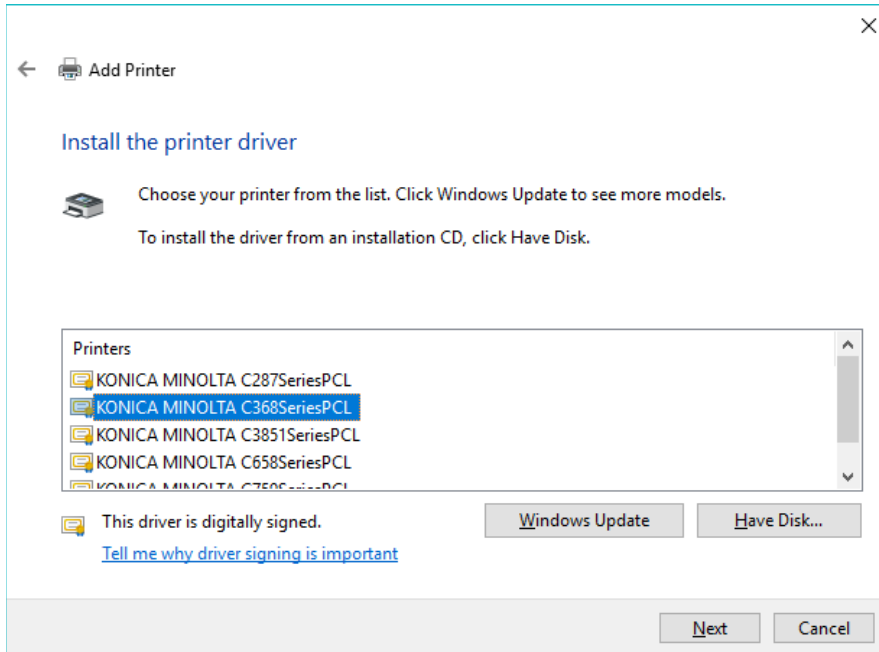
You'll then the folders in the following order: OBGYN_Share, OB_Share, _Staff Stuff, Drivers, _Printer Drivers, C368 (Win10) and then select KOAXPJ_



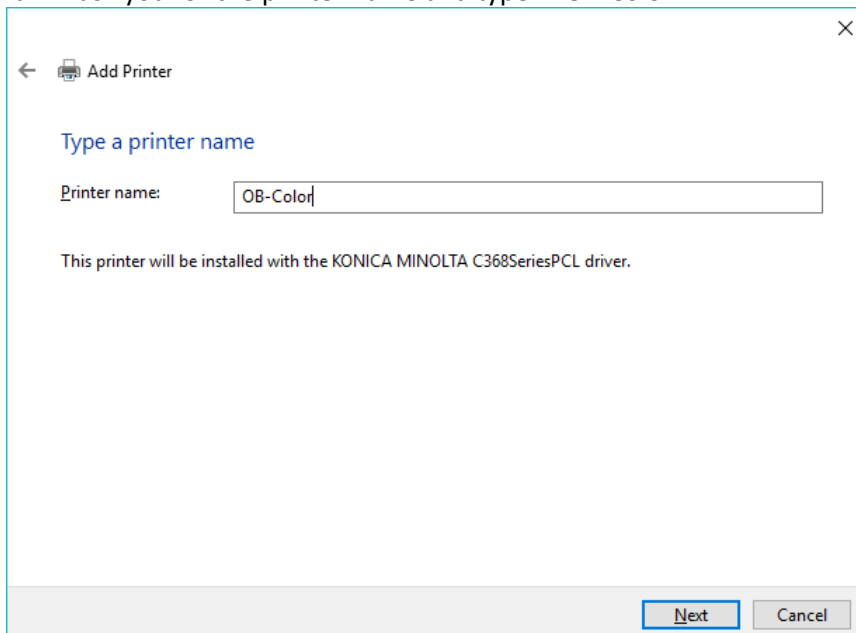
Click on "OK"



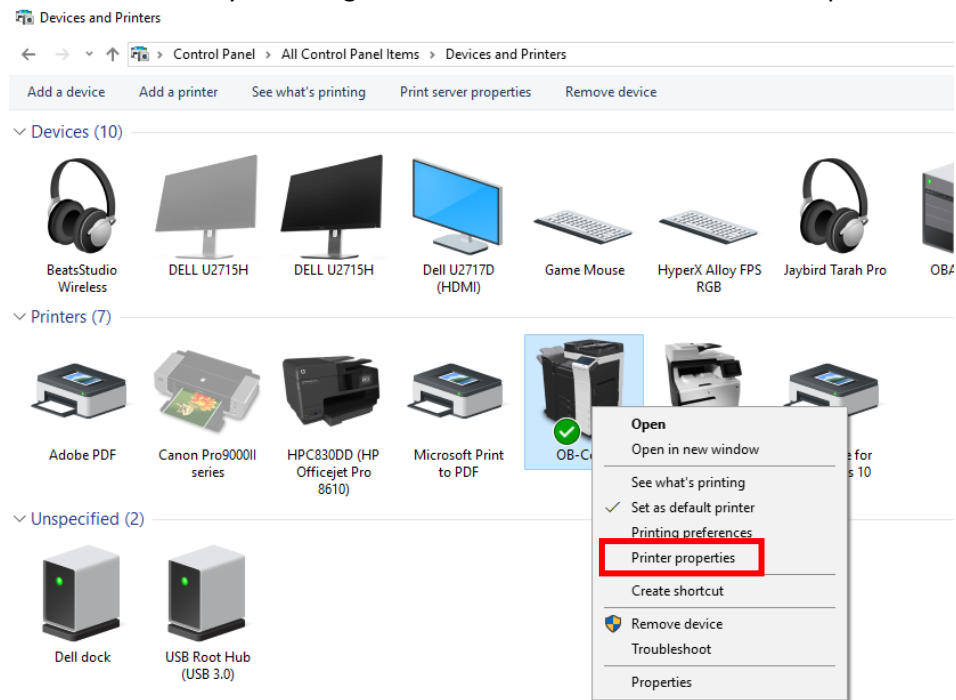
Select Driver KONICA MINOLTA C368SeriesPCL and click on "Next"



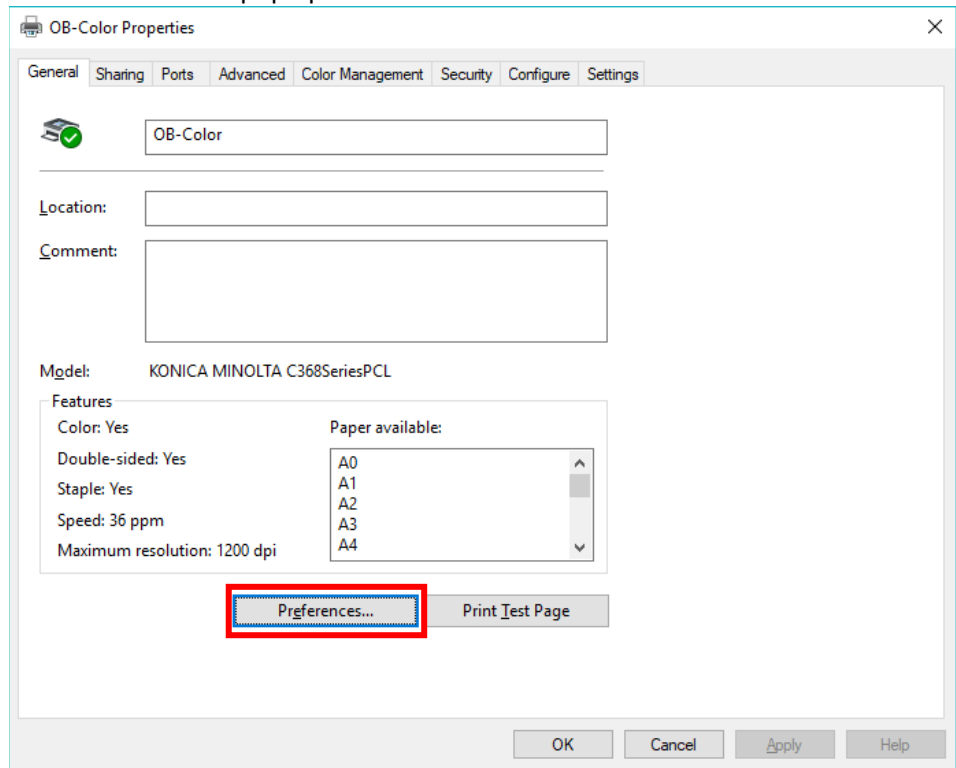
It will ask you for the printer name and type in OB-Color



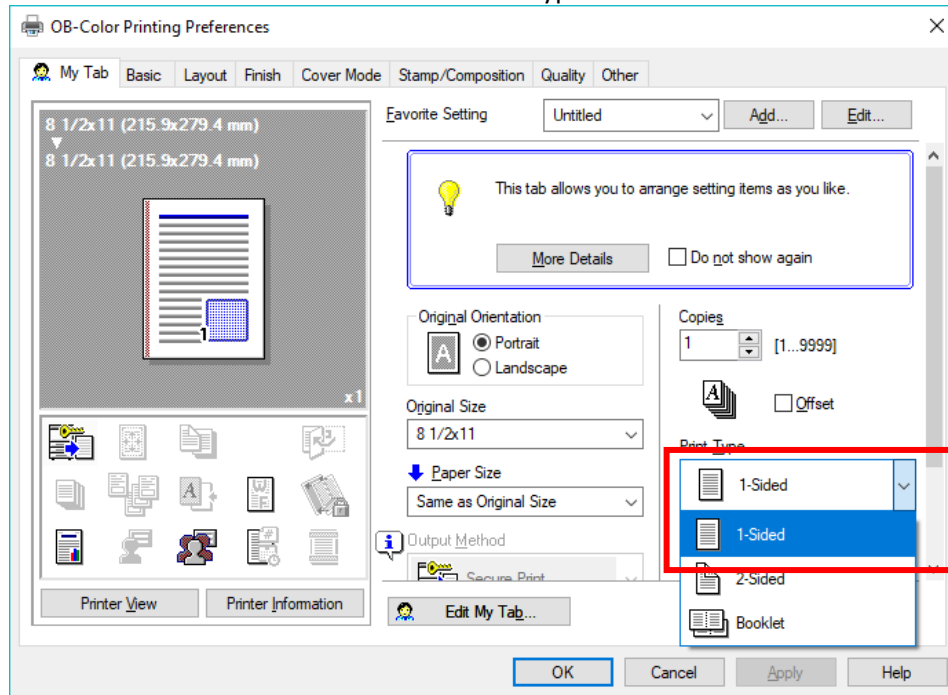
Once it's installed you can right click on it and then select Printer Properties.



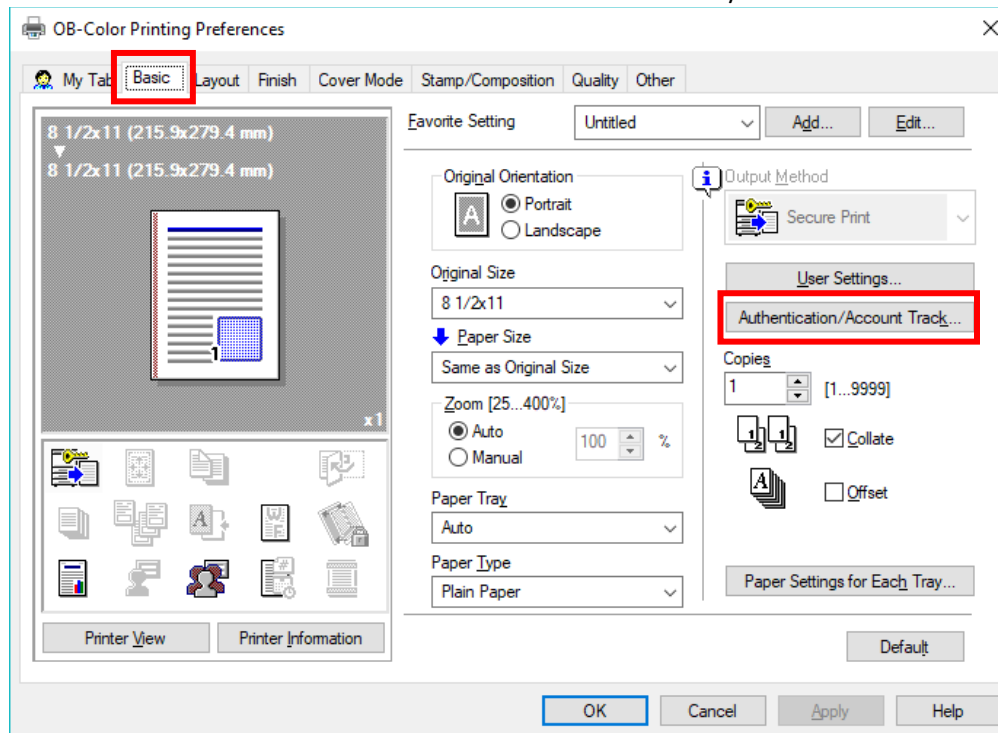
A new window will pop up and click on "Preferences"



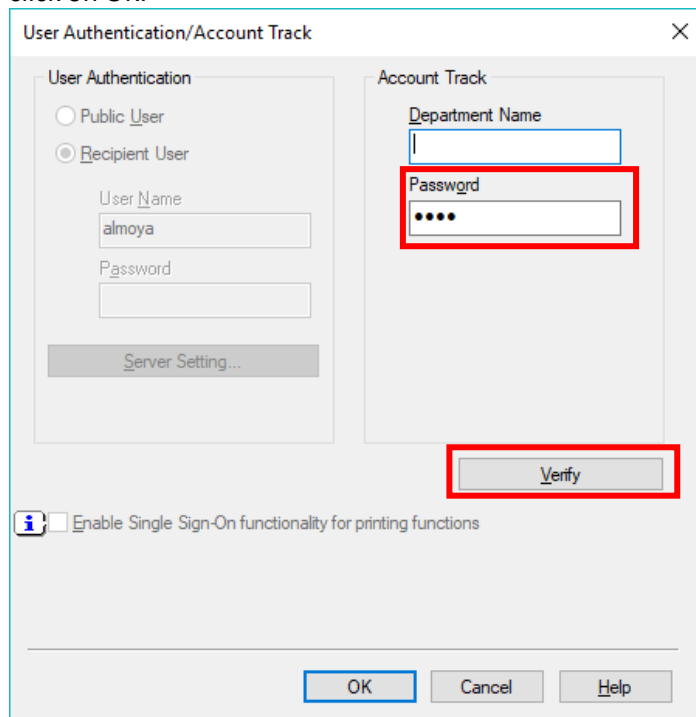
Next make sure to click on 1-Sided on Print Type



You'll then click on the "Basic" tab and select Authentication/Account Track

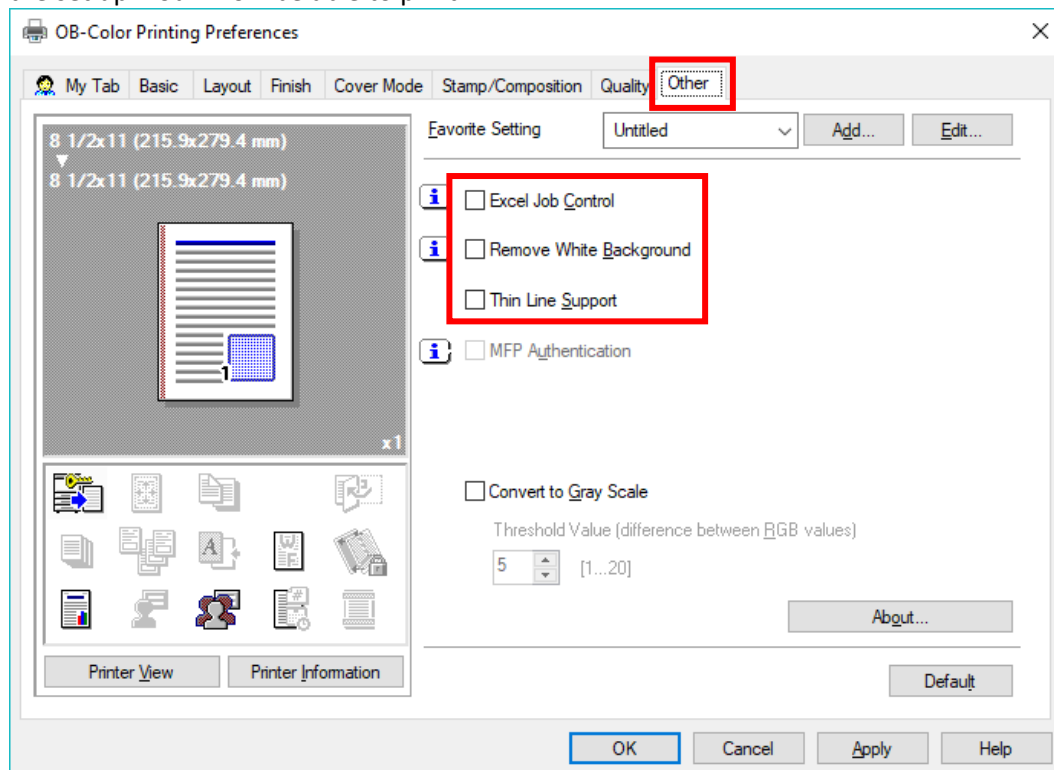


A new window will open and you'll put in your 4 digit printer code in the "Password" field and click on "Verify" and then click on OK.



The "User Authentication/Account Track" dialog box is shown. It has two main sections: "User Authentication" and "Account Track". In the "User Authentication" section, the "Recipient User" radio button is selected, and the "User Name" field contains "almoya". In the "Account Track" section, the "Department Name" field is empty, and the "Password" field contains four dots. A red box highlights the "Password" field. Below the "Account Track" section, a "Verify" button is highlighted with a red box. At the bottom of the dialog, there is an "OK" button, a "Cancel" button, and a "Help" button. A checkbox labeled "Enable Single Sign-On functionality for printing functions" is also present.

Lastly you'll go to the "Other" tab and uncheck the highlighted boxes and click on OK in the remaining windows to finish the set up. You'll now be able to print.



The "OB-Color Printing Preferences" dialog box is shown. It has a tabbed interface with tabs for "My Tab", "Basic", "Layout", "Finish", "Cover Mode", "Stamp/Composition", "Quality", and "Other". The "Other" tab is selected and highlighted with a red box. In the "Other" tab, there are several checkboxes: "Excel Job Control", "Remove White Background", "Thin Line Support", "MFP Authentication", and "Convert to Gray Scale". The first three checkboxes are highlighted with a red box. Below these checkboxes, there is a "Threshold Value (difference between RGB values)" field with a value of 5 and a range of [1...20]. At the bottom of the dialog, there are "OK", "Cancel", "Apply", and "Help" buttons. A "Printer View" button and a "Printer Information" button are also present.