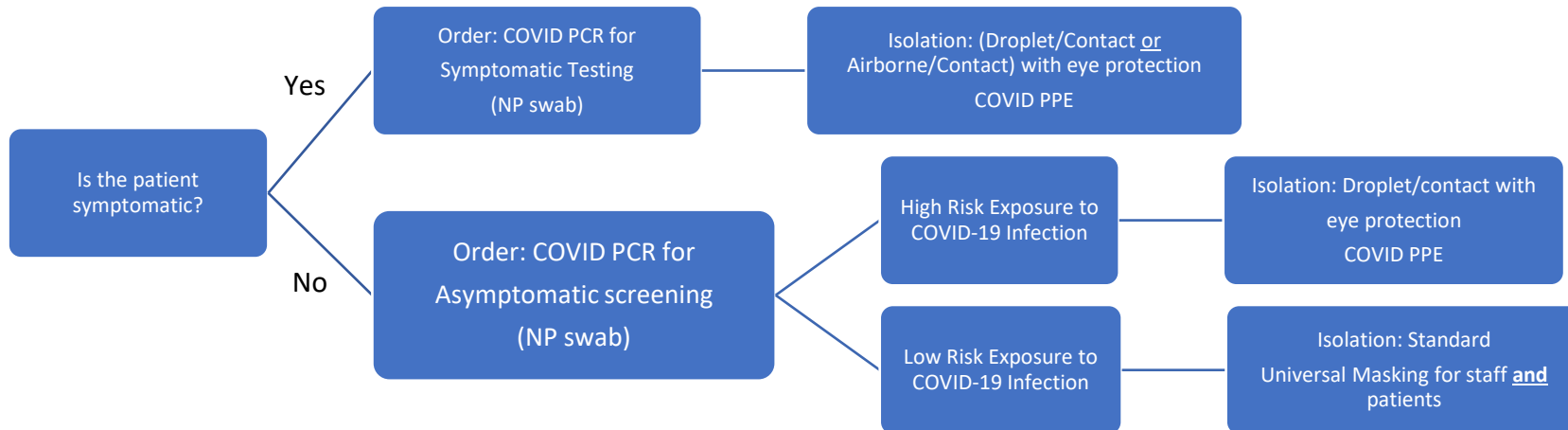


Inpatient Adult COVID Testing on Admission

Overview of adult inpatient COVID-19 PCR testing



Symptoms	High-Risk for COVID-19 Exposure
Cough, shortness of breath <u>or</u> difficulty breathing OR At least two of these symptoms: Fever, chills, repeated shaking with chills, muscle pain, headache, sore throat, new loss of taste or smell Note: Symptoms typically occur 2 – 14 days after exposure	If any one of these is yes, then the patient is at high risk for COVID-19 exposure: <ul style="list-style-type: none"> • Living with someone with known COVID-19 infection? • Coming from a high-risk area (e.g., community spread)? • Patient living in group settings or a facility with known, ongoing outbreaks?

Who to test?

- Emergency Dept patients who are anticipated to be admitted
- Direct admits/transfers
- Patients admitted for surgeries or other procedures

* If testing obtained at an outside facility and are not available at the time of transfer, please contact UNMH Infection Control Emergency On Call to see if we are able to obtain results from transferring facility.

IMPORTANT!! Testing should never impede the appropriate care of patients including consultant evaluations and bed placement.

Inpatient Adult COVID Testing on Admission

Adult Inpatient Management: When Tests are Pending, Positive or Negative

		While COVID-19 PCR Test is Pending			
Symptoms?	High Risk for COVID?	Service	PPE	Isolation	
Yes	Yes	COVID-19 service	COVID-19 PPE	COVID-19 Wards (Rule out or COVID+ wards)	
Yes	No	Disease Dependent Service/Floor			
Unknown	Unknown			Droplet/Contact + Eye protection	Droplet/Contact
No	Yes			Universal Mask Policy	None - shared rooms OK
No	No				

		With Negative COVID-19 Test			
Symptoms?	High Risk for COVID?	Service	PPE	Isolation	Retest?
Yes	Yes	COVID-19 service	Droplet/Contact <u>or</u> Airborne/Contact for AGPs	Droplet/Contact <u>or</u> Airborne/Contact for AGPs	Yes if no other more likely diagnosis, otherwise consider
Yes	No	Disease Dependent	Universal mask Policy	None - shared rooms OK	
Unknown	Unknown				Not indicated
No	Yes or No				

Inpatient Adult COVID Testing on Admission

		With Positive COVID-19 Test		
Symptoms?	High Risk for COVID?	Service	PPE	Isolation
Yes	Yes	COVID-19 service	COVID PPE	Droplet/Contact <u>or</u> Airborne/Contact for AGPs Single room
Yes	No	Disease Dependent		
Unknown	Unknown			
No**	Yes or No			

**if patients develop symptoms, then move patient to a private room and treat like a patient under investigation (PUI)