

# Fab Four

## Feature

Four steps to help enhance 2D imaging and Color Doppler with Voluson technology

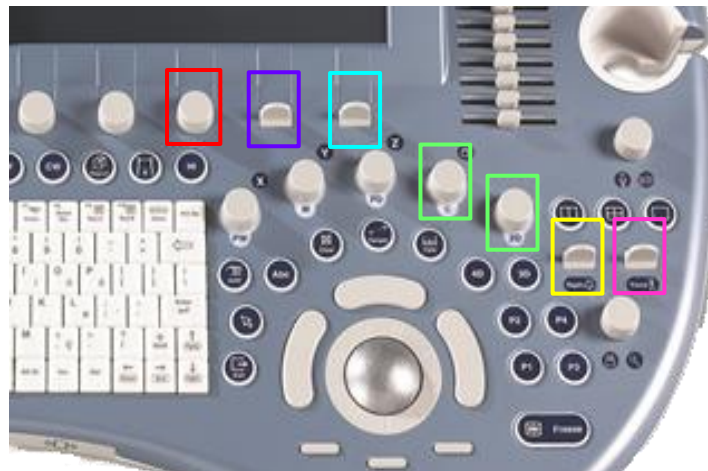
## Application

2D Imaging:

- 1) **Depth** – Adjust depth to center anatomical region of interest
- 2) **Gain** – Adjust gain to brighten or darken an image
- 3) **Focus** – Adjust to at or just below region of interest
- 4) **Frequency** – Increase for enhanced resolution/Decrease for enhanced penetration

Color Doppler:

- 1) **PRF** (Pulsed Repetition Frequency) – Increase to reduce color fill/Decrease to enhance color fill
- 2) **Gain** – Adjust to enhance color signal
- 3) **WMF** (Wall Motion Filter) – Adjust to enhance or diminish signal echoes present
- 4) **Quality** – Increase for enhanced resolution/Decrease for enhanced frame rates



## Tips:

**Output power** can also be increased to enhance penetration or decreased to enhance the near field of an image. In Color Doppler, the output power can be adjusted to customize color fill.



## About GE Healthcare

GE Healthcare provides transformational medical technologies and services to meet the demand for increased access, enhanced quality and more affordable healthcare around the world. GE (NYSE: GE) works on things that matter – great people and technologies taking on tough challenges. From medical imaging, software & IT, patient monitoring and diagnostics to drug discovery, biopharmaceutical manufacturing technologies and performance improvement solutions, GE Healthcare helps medical professionals deliver great healthcare to their patients.



imagination at work

© 2014 General Electric Company – All rights reserved.

General Electric Company reserves the right to make changes in specifications and features shown herein, or discontinue the product described at any time without notice or obligation. Contact your GE Representative for the most current information.

\* GE, the GE monogram, and Voluson are trademarks of General Electric Company.

GE Medical Systems Ultrasound & Primary Care Diagnostics, LLC a General Electric company doing business as GE Healthcare.

GE Healthcare  
9900 Innovation Drive  
Wauwatosa, WI 53226  
U.S.A.  
[www.gehealthcare.com](http://www.gehealthcare.com)

JB22504US